

Test Report

No. ES141030020C001

COOL NEW MATERIALS CO., LTD. WUHU BRANCH

芜湖酷科新材料有限公司

WUHU ECONOMIC AND TECHNOLOGICAL DEVELOPMENT ZONE BRANCH PARK 325.326 CENTER B #

芜湖经济技术开发区科创中心 B 园 325.326#

(The Submitted Sample Said To Be)

样品信息描述

Sample Description : Ferromanganese black

样品名称 : 铁锰黑

Material : 26Pigment Black 26

材料 : 颜料黑

Sample Received Date : October 30, 2014

样品接收日期 : 2014.10.30

Testing Completed Date : October 31, 2014

测试完成日期 : 2014.10.31

Test Requested : As requested by client, according to the directive 2011/65/EU (RoHS) and its amended directives, to determine

测试要求

根据客户要求, 依据欧盟指令 2011/65/EU (RoHS), 检测以下项目:

- 1) the content of Cadmium, Lead and Mercury in the submitted sample;
样品中的镉, 铅和汞的含量;
- 2) the content of Hexavalent Chromium in the submitted sample;
样品中的六价铬的含量;
- 3) the content of PBBs (polybrominated biphenyls) and PBDEs (Polybrominated diphenyl-ethers) in the submitted sample.
样品中的多溴联苯以及多溴联苯醚的含量。

Test Results : Please refer to next page (s).

测试结果

请参看随后页面。

No. ES141030020C001

Executive Summary:

执行测试总结:

| STANDARD 标 准 | CONCLUSION 结 论 |
|---|-------------------|
| Directive 2011/65/EU of the European Parliament and of the Council of 8 June 2011 on the restriction of the use of certain hazardous substances in electrical and electronic equipment. 欧洲议会及理事会于 2011 年 6 月 8 日决定的关于在电子电器产品中限制使用某些有害物质的指令 2011/65/EU (RoHS) | PASS 合格 |

Signed for and on behalf of
Shenzhen EMTEK Co., Ltd.

Manager
October 31, 2014

This Test Report is issued by the Company subject to its General Conditions of Service printed overleaf or available on request and accessible at <http://www.emtek.com.cn>. Attention is drawn to the limitations of liability, indemnification and jurisdictional policies defined therein. The results shown in this test report refer only to the sample(s) tested unless otherwise stated and the sample(s) are retained for 30 days only. This Test Report cannot be reproduced, except in full, without prior written permission of the Company.

No. ES141030020C001

TEST RESULTS:

测试结果:

Test Method : To refer to the standard IEC 62321:2008 Ed.1, the analyses were respectively performed by
测试方法: 参照标准 IEC 62321:2008 Ed.1, 所得溶液分别用以下适合仪器进行分析检测:

- 1) ICP-OES / AAS;
电感耦合等离子体发射光谱仪 (ICP-OES) / 原子吸收光谱仪 (AAS);
- 2) UV-Vis Spectrophotometer;
紫外-可见光谱仪 (UV-Vis);
- 3) GC-MS.
气相色谱质谱联用仪 (GC-MS)。

| Analyte 被分析物 | Test Result (mg/kg) 测试结果 | MDL (mg/kg) | Law Limit 法规限值 (mg/kg) |
|--|-----------------------------|----------------|------------------------------|
| | Black powder 黑色粉末 | | |
| Cadmium (Cd) 镉 (Cd) | ND | 2 | 100 |
| Lead (Pb) 铅 (Pb) | ND | 2 | 1000 |
| Mercury (Hg) 汞 (Hg) | ND | 2 | 1000 |
| Hexavalent Chromium (Cr ⁶⁺) 六价铬 (Cr ⁶⁺) | ND | 2 | 1000 |

No. ES141030020C001

TEST RESULTS:

测试结果:

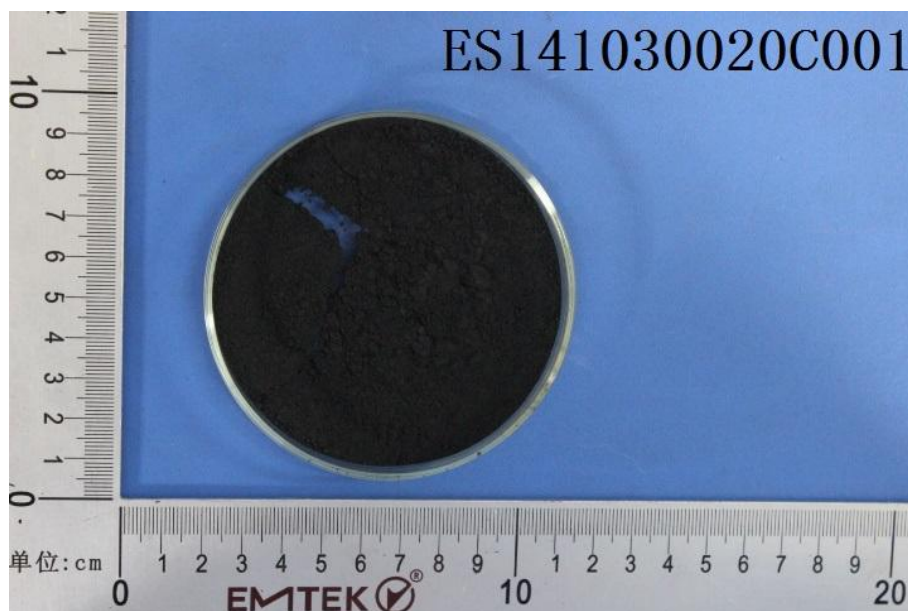
| Analyte 被分析物 | Test Result (mg/kg) 测试结果 | MDL (mg/kg) | Law Limit 法规限值 (mg/kg) |
|--|-----------------------------|----------------|------------------------------|
| | Black powder 黑色粉末 | | |
| Polybrominated Biphenyls (Mono – Deca) (PBBs) 多溴联苯 (1 – 10) (PBBs) | < 50 | -- | 1000 |
| Monobromobiphenyl 单溴联苯 | ND | 5 | -- |
| Dibromobiphenyl 二溴联苯 | ND | 5 | -- |
| Tribromobiphenyl 三溴联苯 | ND | 5 | -- |
| Tetrabromobiphenyl 四溴联苯 | ND | 5 | -- |
| Pentabromobiphenyl 五溴联苯 | ND | 5 | -- |
| Hexabromobiphenyl 六溴联苯 | ND | 5 | -- |
| Heptabromobiphenyl 七溴联苯 | ND | 5 | -- |
| Octabromobiphenyl 八溴联苯 | ND | 5 | -- |
| Nonabromobiphenyl 九溴联苯 | ND | 5 | -- |
| Decabromobiphenyl 十溴联苯 | ND | 5 | -- |
| Polybrominated Diphenylethers (Mono – Deca) (PBDEs) 多溴联苯醚 (1 – 10) (PBDEs) | < 50 | -- | 1000 |
| Monobromodiphenyl ether 单溴联苯醚 | ND | 5 | -- |
| Dibromodiphenyl ether 二溴联苯醚 | ND | 5 | -- |
| Tribromodiphenyl ether 三溴联苯醚 | ND | 5 | -- |
| Tetrabromodiphenyl ether 四溴联苯醚 | ND | 5 | -- |
| Pentabromodiphenyl ether 五溴联苯醚 | ND | 5 | -- |
| Hexabromodiphenyl ether 六溴联苯醚 | ND | 5 | -- |
| Heptabromodiphenyl ether 七溴联苯醚 | ND | 5 | -- |
| Octabromodiphenyl ether 八溴联苯醚 | ND | 5 | -- |
| Nonabromodiphenyl ether 九溴联苯醚 | ND | 5 | -- |
| Decabromodiphenyl ether 十溴联苯醚 | ND | 5 | -- |

- Note : 1. mg/kg = part per million = ppm
备注 mg/kg = 毫克/千克 = 百万分之一
2. ND = Not Detected (Less than MDL)
ND = 未检测到 (小于 MDL)
3. MDL = Method Detection Limit
MDL = 方法检测限

This Test Report is issued by the Company subject to its General Conditions of Service printed overleaf or available on request and accessible at <http://www.emtek.com.cn>. Attention is drawn to the limitations of liability, indemnification and jurisdictional policies defined therein. The results shown in this test report refer only to the sample(s) tested unless otherwise stated and the sample(s) are retained for 30 days only. This Test Report cannot be reproduced, except in full, without prior written permission of the Company.

No. ES141030020C001

Photo Appendix
样品照片

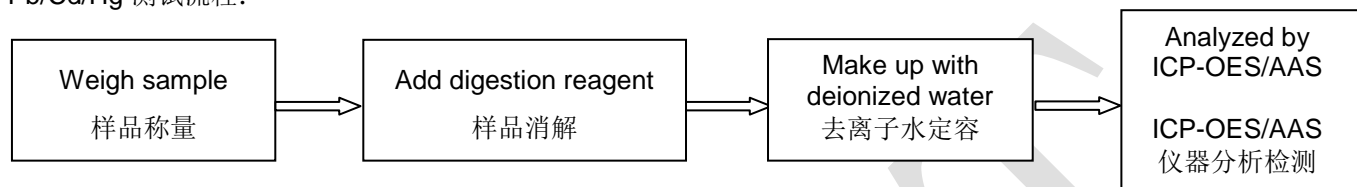


No. ES141030020C001

TEST FLOWCHART 测试流程图

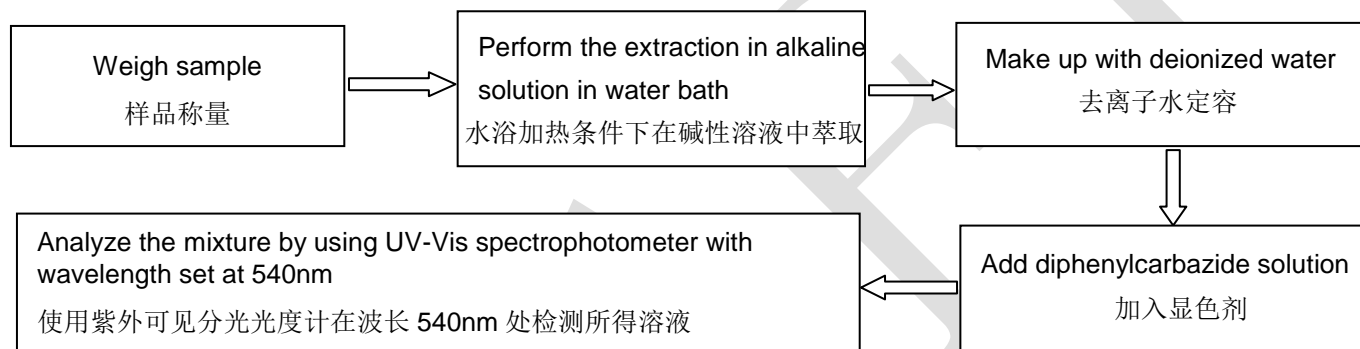
Pb/Cd/Hg Test Process :

Pb/Cd/Hg 测试流程:



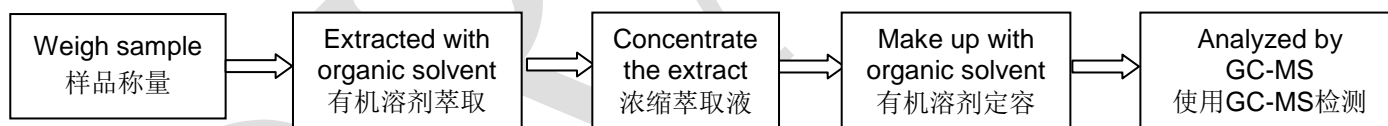
Cr⁶⁺ Test Process:

Cr⁶⁺ 测试流程:



PBBs & PBDEs Test Process:

PBBs & PBDEs 测试流程:



* * * * * The End * * * * *